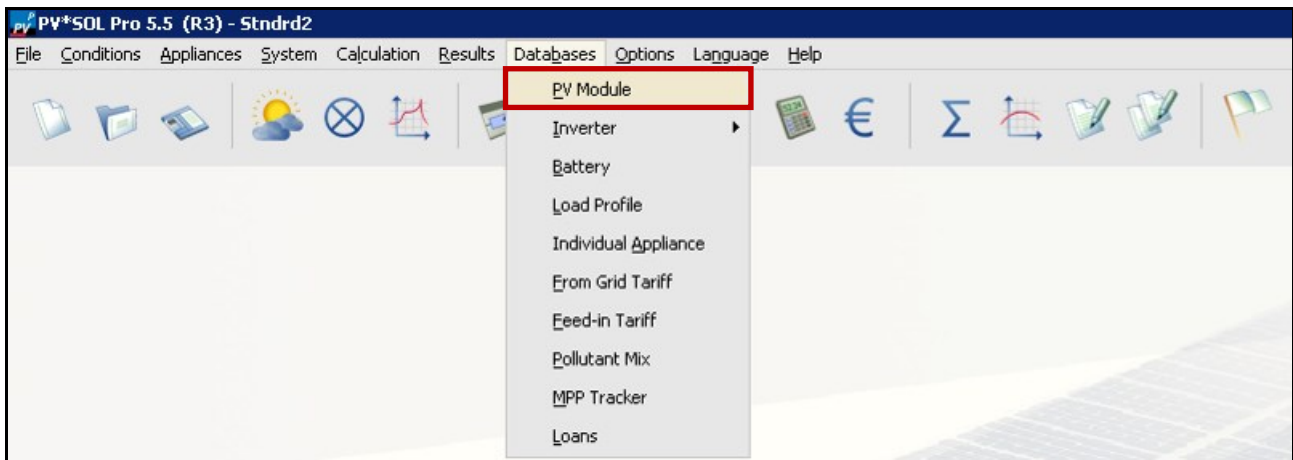
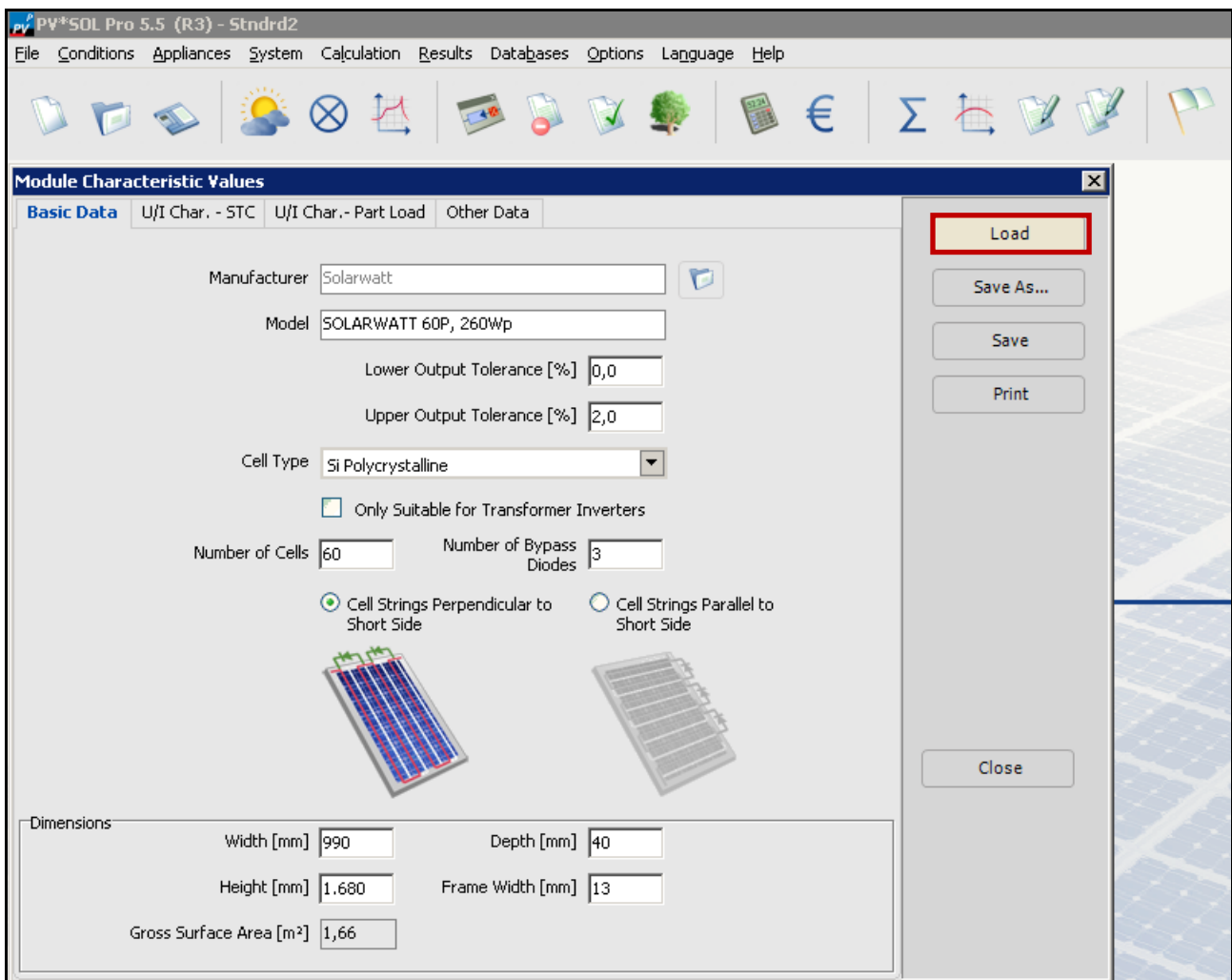


Instruction to import the datasets into PVsol Pro Standalone

1.



2.



3.

PV*SOL Pro 5.5 (R3) - Stndrd2

File Conditions Appliances System Calculation Results Databases Options Language Help

Module Characteristic Values

Basic Data U/I Char. - STC U/I Char. - Part Load Other Data Load

Load File

Show Only User-Created Data Records Show Products that are Not Available

Show All Solarwatt	Manufacturer	Model	Output [W]	MPP Voltage [V]	Max. System Voltage [V]	Wid
	Solarwatt	SOLARWATT 36P, 150Wp	150.0	18.4	1000.0	152C
	Solarwatt	SOLARWATT 60M high power, 285Wp	285.0	31.3	1000.0	168C
	Solarwatt	SOLARWATT 60M high power, 290Wp	290.0	31.5	1000.0	168C
	Solarwatt	SOLARWATT 60M high power, 295Wp	295.0	31.7	1000.0	168C
	Solarwatt	SOLARWATT 60M style, 260Wp	260.0	31.2	1000.0	168C
	Solarwatt	SOLARWATT 60M style, 265Wp	265.0	31.4	1000.0	168C
	Solarwatt	SOLARWATT 60M style, 270Wp	270.0	31.6	1000.0	168C
	Solarwatt	SOLARWATT 60P high power, 275Wp	275.0	31.2	1000.0	168C
	Solarwatt	SOLARWATT 60P high power, 280Wp	280.0	31.4	1000.0	168C
	Solarwatt	SOLARWATT 60P high power, 285Wp	285.0	31.6	1000.0	168C
	Solarwatt	SOLARWATT 60P style, 250Wp	250.0	30.5	1000.0	168C
	Solarwatt	SOLARWATT 60P style, 255Wp	255.0	30.7	1000.0	168C
	Solarwatt	SOLARWATT 60P style, 260Wp	260.0	30.9	1000.0	168C
	Solarwatt	SOLARWATT 60P, 250Wp	250.0	30.5	1000.0	168C
	Solarwatt	SOLARWATT 60P, 255Wp	255.0	30.7	1000.0	168C
	Solarwatt	SOLARWATT 60P, 260Wp	260.0	30.9	1000.0	168C
	Solarwatt	SOLARWATT 60P, 265Wp	265.0	31.1	1000.0	168C
	Solarwatt	SOLARWATT BLUE 60M, 265Wp	265.0	31.4	1000.0	168C

Delete Selection **Import Data Record** Export Data Record OK Cancel